

FLUKE®

Fluke 106/107 Palm-sized Digital Multimeters

Fluke 106 and 107
put measurements in
the palm of your hand



Technical Data

The Fluke 106 and 107 are compact, easy to use tools. These are palm-sized digital multimeters deliver safe, reliable measurements time after time.

The Fluke 106 and 107 are great products made to fit the way you work! These are the only Fluke digital multimeters designed to fit in the palm of your hand and go with you no matter where your job takes you.

Product highlights

- Voltage, resistance, continuity, capacitance
- Input terminal for ac and dc current measurements to 10 A and current
- Data hold
- Backlit display (107 only)
- Diode test, plus frequency and duty cycle measurements (107 only)

Specifications

Electrical specifications

Accuracy is specified for 1 year after calibration, at operating temperatures of 18 °C to 28 °C, relative humidity at 0 % to 75 %. Accuracy specifications take the form of: ±([% of Reading] + [Number of Least Significant Digits])

Function	Range	Resolution	Accuracy	
			106	107
AC volts (40 Hz to 500 Hz) ¹	6.000 V	0.001 V	1.0 % + 3	1.0 % + 3
	60.00 V	0.01 V		
	600.0 V	0.1 V		
DC volts	6.000 V	0.001 V	0.5 % + 3	0.5 % + 3
	60.00 V	0.01 V		
	600.0 V	0.1 V		
	600.0 mV	0.1 mV		
AC millivolts	600.0 mV	0.1 mV	3.0 % + 3	3.0 % + 3
Diode test ²	2.000 V	0.001 V	10 %	
Resistance (ohms)	400.0 Ω	0.1 Ω	0.5 % + 3	0.5 % + 3
	4.000 kΩ	0.001 kΩ	0.5 % + 2	0.5 % + 2
	40.00 kΩ	0.01 kΩ	0.5 % + 2	0.5 % + 2
	400.0 kΩ	0.1 kΩ	0.5 % + 2	0.5 % + 2
	4.000 MΩ	0.001 MΩ	0.5 % + 2	0.5 % + 2
	40.00 MΩ	0.01 MΩ	1.5 % + 3	1.5 % + 3
Capacitance ³	50.00 nF	0.01 nF	2 % + 5	2 % + 5
	500.0 nF	0.1 nF	2 % + 5	2 % + 5
	5.000 μF	0.001 μF	5 % + 5	5 % + 5
	50.00 μF	0.01 μF	5 % + 5	5 % + 5
	500.0 μF	0.1 μF	5 % + 5	5 % + 5
	1000 μF	1 μF	5 % + 5	5 % + 5
	Frequency ⁴ (10 Hz to 100 kHz)	50.00 Hz	0.01 Hz	NA
500.0 Hz		0.1 Hz		
5.000 kHz		0.001 kHz		
50.00 kHz		0.01 kHz		
100.0 kHz		0.1 kHz		
Duty cycle ⁵	0.1 % to 99.9 %	0.1 %	NA	1% typical ⁴
AC current (40 Hz to 200 Hz)	4.000 A	0.001 A	1.5 % + 3	1.5 % + 3
	10.00 A	0.01 A		
DC current	4.000 A	0.001 A	1.5 % + 3	1.5 % + 3
	10.00 A	0.01 A		
Backlight	—	—	No	Yes

¹ All AC, Hz, and duty cycle are specified from 1 % to 100 % of range. Inputs below 1 % of range are not specified.

² Typically, open circuit test voltage is 2.0 V and short circuit current is < 0.6 mA.

³ Specifications do not include errors due to test lead capacitance and capacitance floor (may be up to 1.5 nF in the 50 nF range).

⁴ All AC, Hz, and duty cycle are specified from 1 % to 100 % of range. Inputs below 1 % of range are not specified.

⁵ Typical means when the frequency is at 50 Hz or 60 Hz and the duty cycle is between 10 % and 90 %.

Function	Overload protection	Input impedance (nominal)	Common mode rejection ratio	Normal mode rejection ratio
AC volts	600 V ¹	> 10 MΩ < 100 pF ²	> 60 dB at dc, 50 Hz or 60 Hz	—
AC millivolts	600 mV	> 1M < 100 pF	> 80 dB at 50 Hz or 60 Hz	—
DC volts	600 V ¹	> 10 MΩ < 100 pF	> 100 dB at dc, 50 Hz or 60 Hz	> 45 dB at 50 Hz or 60 Hz

¹ 6 x 105 V Hz Max.

² For mV (AC), input impedance is approximately 1 MΩ.



General specifications

Maximum voltage between any terminal and earth ground	600 V
Display (LCD)	6000 counts, updates 3/sec
Battery type	2 AAA, NEDA 24A, IEC LR03
Battery life	200 hours minimum
Temperature	Operating: 0 °C to 40 °C Storage: -30 °C to 60 °C
Relative humidity	Operating Humidity: Non-condensing when < 10 °C ≤ 90 % at 10 °C to 30 °C; ≤ 75 % at 30 °C to 40 °C Operating Humidity, 40 MΩ Range: ≤ 80 % at 10 °C to 30 °C; ≤ 70 % at 30 °C to 40 °C
Altitude	Operating: 2000 m Storage: 12,000 m
Temperature coefficient	0.1 X (specified accuracy)/°C (< 18 °C or > 28 °C)
Fuse protection for current inputs	11 A, 1000 V Fast Fuse, Fluke specified part only
Size (HxWxL)	142 mm x 69 mm x 28mm
Weight	200 g
IP rating	IEC 60529: IP 40
Safety	IEC 61010-1: 600 V CAT III, Pollution Degree 2
Electromagnetic environment	IEC 61326-1: portable
Electromagnetic compatibility	Applies to use the Korea only. Class A Equipment (Industrial broadcasting and communication equipment) ¹
Warranty	One year

¹ This product meets requirements for industrial (Class A) electromagnetic wave equipment and seller or user should take notice of it. This equipment is intended for use in business environments and is not to be used in homes.

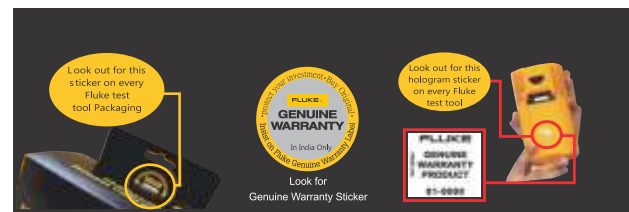
Ordering information

FLUKE-106 Digital Multimeter
FLUKE-107 Digital Multimeter

Included equipment

- TL75 Test leads
- 2 AAA Batteries (installed)
- User's manual

Fluke. The Most Trusted Tools in the World.



TTL Technologies Pvt. Ltd.

(A Fluke Company)

Deodhar Center, 424, Marol Maroshi Road, Andheri (E), Mumbai - 400059

Helpdesk : 1 800 209 9110 | Email : retail.india@fluke.com | Web : www.fluke.com/india

www.facebook.com/flukeindia